

# MONA OFFSHORE WIND PROJECT

## Environmental Statement

Volume 7, Annex 6.6: Tree survey and arboricultural impact assessment  
Part 7 - Appendix C

Reference Number: MOCNS-J3303-RPS-10193

Document Reference: F7.6.6

APFP Regulations: 5(2)(a)

February 2024

F01



Image of an offshore wind farm

## MONA OFFSHORE WIND PROJECT

Document status					
Version	Purpose of document	Authored by	Reviewed by	Approved by	Review date
F01	Application	RPS	Mona Offshore Wind Limited	Mona Offshore Wind Limited	Feb 2024
Prepared by:		Prepared for:			
RPS		Mona Offshore Wind Ltd.			





**LEGEND**

Project boundary.

Tree with numbered reference.  
Canopy spread and coloured BS5837:2012 tree quality category as shown below.  
# = Tree details estimate (inaccessible tree)  
• = Tree in off site location

Vegetation group with numbered reference.  
Canopy extents and coloured BS5837:2012 tree quality category as shown below.

Hedge with numbered reference.  
Canopy extents and coloured BS5837:2012 tree quality category as shown below.

Woodland with numbered reference.  
Canopy extents and coloured BS5837:2012 tree quality category as shown below.

BS 5837:2012 Tree Quality Categories - Table 1

Category A - High quality

Category B - Moderate quality

Category C - Low quality

Category U - Unsuitable for retention

Tree or vegetation to be removed with numbered reference, Canopy spread and BS5837:2012 tree quality category.

Root protection area (RPA)  
Calculated in accordance with Section 4.6 - BS5837:2012

Precautionary Root protection area (RPA)  
Added to un-surveyed trees, preliminary 15mØ RPA added as preventative buffer

Tree protected by Conwy Council or Denbighshire Tree Preservation Order (TBC). Bracketted number reference relates to the TPO Schedule.

Veteran tree buffer (15 x stem Ø)  
(as per standing advice produced by Natural Resource Wales)

Designated Ancient Woodland and buffer (15m offset, as per Natural Resource Wales woodland inventory, via open data publication)

Arboricultural BRAG Assessment

Based on quantitative and professional assessment. The ranking is defined as:

Black: Significant arboreal asset within development;

Red: High potential to constrain development;

Amber: Moderate potential to constrain development; and

Green: Low potential to constrain development

Construction Compound or Access Area

Arboricultural constraint based on providing a construction exclusion zone (CEZ):

Black: At all times, compound should avoid entering this area;

Red: In nearly all circumstances, compound should avoid entering this area;

Amber: In most circumstances, compound should avoid entering this area;

Green: Little or no arboricultural constraint which would affect compound location.

Cable Crossing Technique

Trenchless

Trenching / Trenchless

Trenched

Temporary protective fencing in accordance with Section 6.2 - BS5837:2012. See example, also shown within supporting report.

Temporary visual warning barrier. See example detail, also shown within supporting report.

NOTES:

- Refer to RPS Tree Survey & Arboricultural Impact Assessment Report for further details.
- Survey based on a visual inspection from the ground and is not intended as a full arboricultural inspection.
- Plan produced in accordance with recommendations set out in BS 5837:2012 - 'Trees in Relation to design, demolition and construction'.
- Due to the legal protection afforded to breeding birds vegetation removal should not take place during the bird nesting period, generally, although not restricted to, March - August inclusive.
- Survey based upon aerial photography, therefore tree locations should be deemed as approximate, and not digitally accurate.
- Pedestrian/vehicular emergency access routes to be maintained at all times.
- All protective fencing to be completed and approved by LPA / CA prior to commencement of any site works.
- All works to conform with requirements of:  
BS 5838:2010 - Tree Works  
BS 5837:2012 - Tree Works  
Trees in relation to design, demolition and construction

Rev	Description	By	CB	Date

EnBW

bfc

RPS

Partners in UK offshore wind

Drawing Number:  
**7120**

VER	DATE	DETAILS	BY	CHECK
01	Jan/24	Comment	RC	DC
02	Feb/24	Information	RC	DC

**Project Name:**  
MONA OFFSHORE WIND PROJECT

**Drawing Title:**  
TREE AND HEDGEROW PROTECTION PLAN

**Scale**  
Scale@A0: 1:500

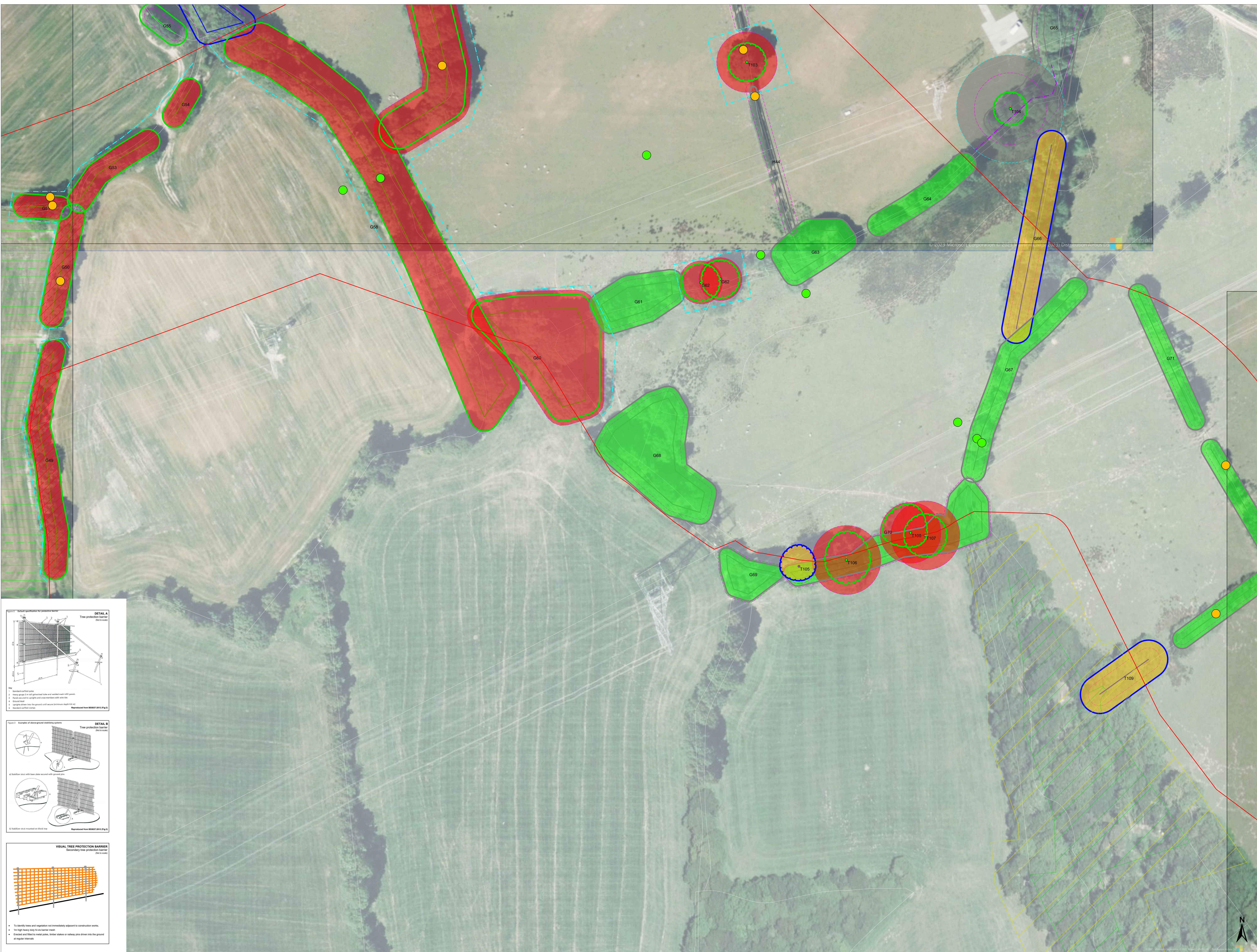
**Geodetic Information:**  
Datum: ETRS 1989  
Projection: British National Grid

**Data Sources:** Client

**Service Layer Credits:** Esri, HERE, Garmin, Intermap, increment P Corp., GEBCO, USGS, FAO, NPS, NRCAN, GeoBase, IGN, Kadaster NL, Ordnance Survey, Esri Japan, METI, Esri China (Hong Kong), (c) OpenStreetMap contributors, and the GIS User Community

P:\3990 Series\JSL3999 - Morgan and Monia OWW\Arboricultural\Tech\ACAD\Current\JSL3999\_800C\_TPP Cable Route.dwg  
P:\3990 Series\JSL3999 - Morgan and Monia OWW\Arboricultural\Tech\ACAD\Current\JSL3999\_800C\_TPP Cable Route.dwg





### LEGEND

Project boundary.

Tree with numbered reference.  
Canopy spread and coloured BS5837:2012 tree quality category as shown below.  
# = Tree details estimate (inaccessible tree)  
• = Tree off site location

Vegetation group with numbered reference.  
Canopy extents and coloured BS5837:2012 tree quality category as shown below.

Hedge with numbered reference.  
Canopy extents and coloured BS5837:2012 tree quality category as shown below.

Woodland with numbered reference.  
Canopy extents and coloured BS5837:2012 tree quality category as shown below.

BS 5837:2012 Tree Quality Categories - Table 1

- Category A - High quality
- Category B - Moderate quality
- Category C - Low quality
- Category U - Unsuitable for retention

Tree or vegetation to be removed with numbered reference. Canopy spread and BS5837:2012 tree quality category.

Root protection area (RPA)  
Calculated in accordance with Section 4.6 - BS5837:2012

Precautionary Root protection area (RPA)  
Added to un-surveyed trees, preliminary 15mØ RPA added as preventative buffer

Tree protected by Conwy Council or Denbighshire Tree Preservation Order (TBC). Bracketed number reference relates to the TPO Schedule.

Veteran tree buffer (15 x stem Ø)  
(as per standing advice produced by Natural Resource Wales)

Designated Ancient Woodland and buffer (15m offset, as per Natural Resource Wales woodland inventory, via open data publication)

**Arboricultural BRAG Assessment**  
Based on quantitative and professional assessment.  
The ranking is defined as:

- Black: Significant arboreal asset within development;
- Red: High potential to constrain development;
- Amber: Moderate potential to constrain development; and
- Green: Low potential to constrain development

**Construction Compound or Access Area**  
Arboricultural constraint based on providing a construction exclusion zone (CEZ):

- Black: At all times, compound should avoid entering this area;
- Red: In nearly all circumstances, compound should avoid entering this area;
- Amber: In most circumstances, compound should avoid entering this area;
- Green: Little or no arboricultural constraint which would affect compound location.

**Cable Crossing Technique**

- Trenchless
- Trenching / Trenchless
- Trenched

Temporary protective fencing in accordance with Section 6.2 - BS5837:2012. See example, also shown within supporting report.

Temporary visual warning barrier. See example detail, also shown within supporting report.

**NOTES:**

- Refer to RPS Tree Survey & Arboricultural Impact Assessment Report for further details.
- Survey based on a visual inspection from the ground and is not intended as a full arboricultural inspection.
- Plan produced in accordance with recommendations set out in BS 5837:2012 - 'Trees in Relation to design, demolition and construction'.
- Due to the high protection afforded to breeding birds, vegetation removal should not take place during the bird nesting period, generally, although not restricted to, March - August inclusive.
- Survey based upon aerial photography, therefore tree locations should be deemed as approximate, and not digitally accurate.
- Pedestrian/ vehicular emergency access routes to be maintained at all times.
- All protective fencing to be completed and approved by LPA / CA prior to commencement of any site works.
- All works to conform with requirements of:  
BS 5838:2010 - Tree Works  
BS 5837:2012 - Trees in relation to design, demolition and construction

Rev	Description	By	CB	Date

Partners in UK offshore wind

Drawing Number:

7121

VER	DATE	DETAILS	BY	CHECK
01	Jan/24	Comment	RC	DC
02	Feb/24	Information	RC	DC





### LEGEND

Project boundary.

Tree with numbered reference.  
Canopy spread and coloured BS5837:2012 tree quality category as shown below.  
# = Tree details estimate (inaccessible tree)  
• = Tree in off site location

Vegetation group with numbered reference.  
Canopy extents and coloured BS5837:2012 tree quality category as shown below.

Hedge with numbered reference.  
Canopy extents and coloured BS5837:2012 tree quality category as shown below.

Woodland with numbered reference.  
Canopy extents and coloured BS5837:2012 tree quality category as shown below.

BS 5837:2012 Tree Quality Categories - Table 1

Category A - High quality

Category B - Moderate quality

Category C - Low quality

Category U - Unsuitable for retention

Tree or vegetation to be removed with numbered reference. Canopy spread and BS5837:2012 tree quality category.

Root protection area (RPA)  
Calculated in accordance with Section 4.6 - BS5837:2012

Precautionary Root protection area (RPA)  
Added to un-surveyed trees, preliminary 15mØ RPA added as preventative buffer

Tree protected by Conwy Council or Denbighshire Tree Preservation Order (TBC). Bracketted number reference relates to the TPO Schedule.

Veteran tree buffer (15 x stem Ø)  
(as per standing advice produced by Natural Resource Wales)

Designated Ancient Woodland and buffer (15m offset, as per Natural Resource Wales woodland inventory, via open data publication)

Arboricultural BRAG Assessment

Based on quantitative and professional assessment. The ranking is defined as:

Black: Significant arboreal asset within development;

Red: High potential to constrain development;

Amber: Moderate potential to constrain development; and

Green: Low potential to constrain development

Construction Compound or Access Area

Arboricultural constraint based on providing a construction exclusion zone (CEZ):

Black: At all times, compound should avoid entering this area;

Red: In nearly all circumstances, compound should avoid entering this area;

Amber: In most circumstances, compound should avoid entering this area;

Green: Little or no arboricultural constraint which would affect compound location.

Cable Crossing Technique

Trenchless

Trenching / Trenchless

Trenched

Temporary protective fencing in accordance with Section 6.2 - BS5837:2012. See example, also shown within supporting report.

Temporary visual warning barrier. See example detail, also shown within supporting report.

NOTES:

- Refer to RPS Tree Survey & Arboricultural Impact Assessment Report for further details
- Survey based on a visual inspection from the ground and is not intended as a full arboricultural inspection
- Plan produced in accordance with recommendations set out in BS 5837:2012 - "Trees in Relation to design, demolition and construction"
- Due to legal protection afforded to breeding birds vegetation removal should not take place during the bird nesting period, generally, although not restricted to, March - August inclusive.
- Survey based upon aerial photography, therefore tree locations should be deemed as approximate, and not digitally accurate
- Pedestrian/vehicular emergency access routes to be maintained at all times.
- All protective fencing to be completed and approved by LPA / CA prior to commencement of any site works
- All works to conform with requirements of:  
BS 5838:2010 - Tree Works  
BS 5837:2012 - Trees in relation to design, demolition and construction

Rev	Description	By	CB	Date

Partners in UK offshore wind

Drawing Number:  
**7122**

VER	DATE	DETAILS	BY	CHECK
01	Jan/24	Comment	RC	DC
02	Feb/24	Information	RC	DC

Project Name:

MONA OFFSHORE WIND PROJECT

Drawing Title:

TREE AND HEDGEROW PROTECTION PLAN

Scale

Scale@A0: 1:500

Geodetic Information:

Datum: ETRS 1989  
Projection: British National Grid

Data Sources:

Client

Service Layer Credits:

Esri, HERE, Garmin, Intermap, increment P Corp., GEBCO, USGS, FAO, NPS, NRCAN, GeoBase, IGN, Kadaster NL, Ordnance Survey, Esri Japan, METI, Esri China (Hong Kong), (c) OpenStreetMap contributors, and the GIS User Community

P:\3090 Series\USL3099 - Morgan and Monie OMF\Arboriculture\Tech\ACAD\Current\USL3099\_800C\_TPP\_Cable\_Route.dwg  
P:\3090 Series\USL3099 - Morgan and Monie OMF\Arboriculture\Tech\ACAD\Current\USL3099\_800C\_TPP\_Cable\_Route.dwg





### LEGEND

Project boundary.

Tree with numbered reference.  
Canopy spread and coloured BS5837:2012 tree quality category as shown below.  
# = Tree details estimate (inaccessible tree)  
• = Tree in off site location

Vegetation group with numbered reference.  
Canopy extents and coloured BS5837:2012 tree quality category as shown below.

Hedge with numbered reference.  
Canopy extents and coloured BS5837:2012 tree quality category as shown below.

Woodland with numbered reference.  
Canopy extents and coloured BS5837:2012 tree quality category as shown below.

BS 5837:2012 Tree Quality Categories - Table 1

- Category A - High quality
- Category B - Moderate quality
- Category C - Low quality
- Category U - Unsuitable for retention

Tree or vegetation to be removed with numbered reference. Canopy spread and BS5837:2012 tree quality category.

Root protection area (RPA)  
Calculated in accordance with Section 4.6 - BS5837:2012

Precautionary Root protection area (RPA)  
Added to un-surveyed trees, preliminary 15mØ RPA added as preventative buffer

Tree protected by Conwy Council or Denbighshire Tree Preservation Order (TBC). Bracketted number reference relates to the TPO Schedule.

Veteran tree buffer (15 x stem Ø)  
(as per standing advice produced by Natural Resource Wales)

Designated Ancient Woodland and buffer (15m offset, as per Natural Resource Wales woodland inventory, via open data publication)

Arboricultural BRAG Assessment

Based on quantitative and professional assessment. The ranking is defined as:

- Black: Significant arboreal asset within development;
- Red: High potential to constrain development;
- Amber: Moderate potential to constrain development; and
- Green: Low potential to constrain development

Construction Compound or Access Area

Arboricultural constraint based on providing a construction exclusion zone (CEZ):

- Black: At all times, compound should avoid entering this area;
- Red: In nearly all circumstances, compound should avoid entering this area;
- Amber: In most circumstances, compound should avoid entering this area;
- Green: Little or no arboricultural constraint which would affect compound location.

Cable Crossing Technique

- Trenchless
- Trenching / Trenchless
- Trenched

Temporary protective fencing in accordance with Section 6.2 - BS5837:2012. See example, also shown within supporting report.

Temporary visual warning barrier. See example detail, also shown within supporting report.

NOTES:

- Refer to RPS Tree Survey & Arboricultural Impact Assessment Report for further details
- Survey based on a visual inspection from the ground and is not intended as a full arboricultural inspection
- Plan produced in accordance with recommendations set out in BS 5837:2012 - 'Trees in Relation to design, demolition and construction'
- Due to the high protection afforded to breeding birds vegetation removal should not take place during the bird nesting period, generally, although not restricted to, March - August inclusive.
- Survey based upon aerial photography, therefore tree locations should be deemed as approximate, and not digitally accurate
- Pedestrian/vehicular emergency access routes to be maintained at all times.
- All protective fencing to be completed and approved by LPA / CA prior to commencement of any site works
- All works to conform with requirements of:  
BS 3698:2010 - Tree Works  
BS 5837:2012 - Trees in relation to design, demolition and construction

Rev	Description	By	CB	Date

Partners in UK offshore wind

Drawing Number:

7123

VER	DATE	DETAILS	BY	CHECK
01	Jan/24	Comment	RC	DC
02	Feb/24	Information	RC	DC

**Project Name:**  
MONA OFFSHORE WIND PROJECT

**Drawing Title:**  
TREE AND HEDGEROW PROTECTION PLAN

**Scale**  
Scale@A0: 1:500  
0 50m

**Geodetic Information:**  
Datum: ETRS 1989  
Projection: British National Grid

**Data Sources:** Client

**Service Layer Credits:** Esri, HERE, Garmin, Intermap, increment P Corp., GEBCO, USGS, FAO, NPS, NRCAN, GeoBase, IGN, Kadaster NL, Ordnance Survey, Esri Japan, METI, Esri China (Hong Kong), (c) OpenStreetMap contributors, and the GIS User Community

P:\3090 Series\USL3099 - Morgan and Mone O&F\Arboriculture\Tech\ACAD\Current\USL3099\_800C\_TPP\_Cable\_Route.dwg  
P:\3090 Series\USL3099 - Morgan and Mone O&F\Arboriculture\Tech\ACAD\Current\USL3099\_800C\_TPP Cable Route.dwg









LEGEND

- Project boundary.
- Tree with numbered reference.  
Canopy spread and coloured BS5837:2012 tree quality category as shown below.  
# = Tree details estimate (inaccessible tree)  
• = Tree in off site location
- Vegetation group with numbered reference.  
Canopy extents and coloured BS5837:2012 tree quality category as shown below.
- Hedge with numbered reference.  
Canopy extents and coloured BS5837:2012 tree quality category as shown below.
- Woodland with numbered reference.  
Canopy extents and coloured BS5837:2012 tree quality category as shown below.
- BS 5837:2012 Tree Quality Categories - Table 1
- Category A - High quality
  - Category B - Moderate quality
  - Category C - Low quality
  - Category U - Unsuitable for retention
- Tree or vegetation to be removed with numbered reference. Canopy spread and BS5837:2012 tree quality category.
- Root protection area (RPA)  
Calculated in accordance with Section 4.6 - BS5837:2012
- Precautionary Root protection area (RPA)  
Added to un-surveyed trees, preliminary 15mØ RPA added as preventative buffer
- Tree protected by Conwy Council or Denbighshire Tree Preservation Order (TBC). Bracketted number reference relates to the TPO Schedule.
- Veteran tree buffer (15 x stem Ø)  
(as per standing advice produced by Natural Resource Wales)
- Designated Ancient Woodland and buffer (15m offset, as per Natural Resource Wales woodland inventory, via open data publication)

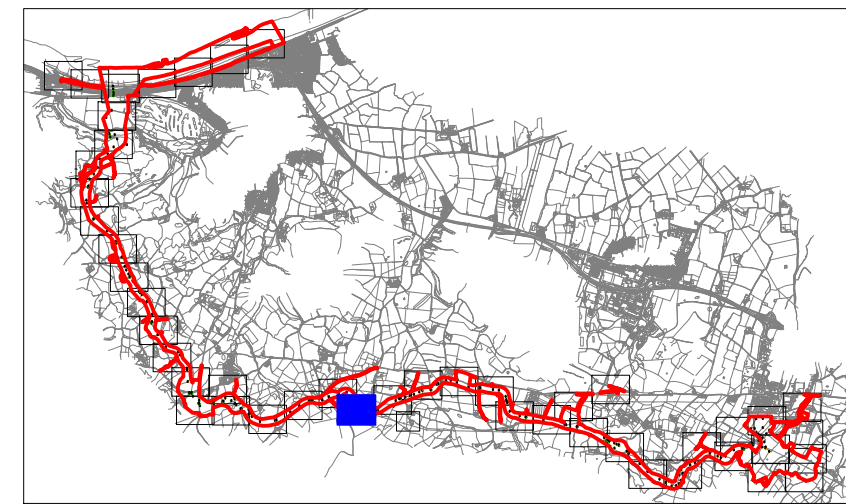
- Arboricultural BRAG Assessment  
Based on quantitative and professional assessment.  
The ranking is defined as:
- Black: Significant arboreal asset within development;
  - Red: High potential to constrain development;
  - Amber: Moderate potential to constrain development; and
  - Green: Low potential to constrain development

- Construction Compound or Access Area  
Arboricultural constraint based on providing a construction exclusion zone (CEZ).
- Black: At all times, compound should avoid entering this area;
  - Red: In nearly all circumstances, compound should avoid entering this area;
  - Amber: In most circumstances, compound should avoid entering this area;
  - Green: Little or no arboricultural constraint which would affect compound location.

- Cable Crossing Technique
- Trenchless
  - Trenching / Trenchless
  - Trenched

- Temporary protective fencing in accordance with Section 6.2 - BS5837:2012. See example, also shown within supporting report.
- Temporary visual warning barrier. See example detail, also shown within supporting report.

- NOTES:
- Refer to RPS Tree Survey & Arboricultural Impact Assessment Report for further details.
  - Survey based on a visual inspection from the ground and is not intended as a full arboricultural inspection.
  - Plan produced in accordance with recommendations set out in BS 5837:2012 - 'Trees in Relation to design, demolition and construction'.
  - Due to the high protection afforded to breeding birds vegetation removal should not take place during the bird nesting period, generally, although not restricted to, March - August inclusive.
  - Survey based upon aerial photography, therefore tree locations should be deemed as approximate, and not digitally accurate.
  - Pedestrian/vehicular emergency access routes to be maintained at all times.
  - All protective fencing to be completed and approved by LPA / CA prior to commencement of any site works.
  - All works to conform with requirements of:  
BS 5838:2010 - Tree Works  
BS 5837:2012 - Trees in relation to design, demolition and construction



Rev	Description	By	CB	Date



Drawing Number:

7125

Project Name:  
MONA OFFSHORE WIND PROJECT

Tree and Hedgerow Protection  
Plan

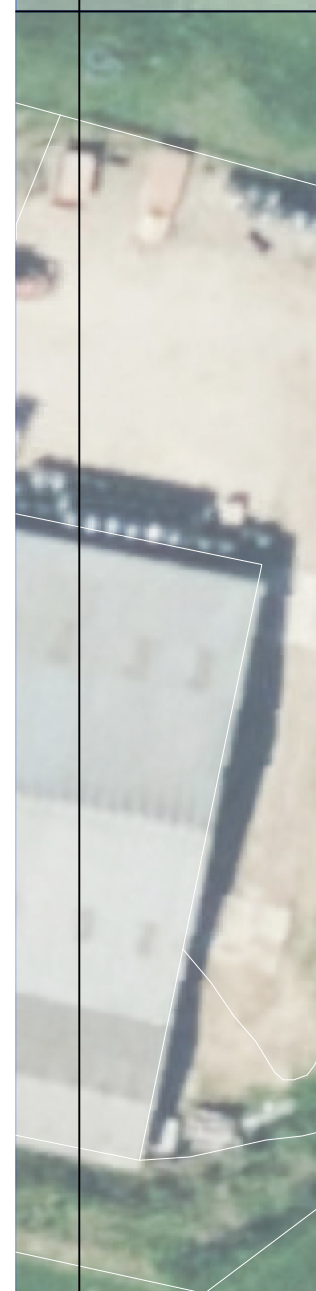
Scale  
Scale@A0: 1:500  
0 50m

Geodetic Information:  
Datum: ETRS 1989  
Projection: British National Grid

Data Sources: Client

Service Layer Credits: Esri, HERE, Garmin, Intermap, increment P Corp., GEBCO, USGS, FAO, NPS, NRCAN, GeoBase, IGN, Kadaster NL, Ordnance Survey, Esri Japan, METI, Esri China (Hong Kong), (c) OpenStreetMap contributors, and the GIS User Community





**LEGEND**

Project boundary.

T1

Tree with numbered reference.  
Canopy spread and coloured BS5837:2012 tree quality category as shown below.  
# = Tree details estimate (inaccessible tree)  
• = Tree in off site location

G1

Vegetation group with numbered reference.  
Canopy extents and coloured BS5837:2012 tree quality category as shown below.

H1

Hedge with numbered reference.  
Canopy extents and coloured BS5837:2012 tree quality category as shown below.

W1

Woodland with numbered reference.  
Canopy extents and coloured BS5837:2012 tree quality category as shown below.

BS 5837:2012

Tree Quality Categories - Table 1

Category A - High quality

Category B - Moderate quality

Category C - Low quality

Category U - Unsuitable for retention

T1

Tree or vegetation to be removed with  
numbered reference. Canopy spread and  
BS5837:2012 tree quality category.

Root protection area (RPA)  
Calculated in accordance with Section  
4.6 - BS5837:2012

Precautionary Root protection area (RPA)  
Added to un-surveyed trees, preliminary  
15mØ RPA added as preventative buffer

Tree protected by Conwy Council or  
Denbighshire Tree Preservation Order  
(TBC). Bracketed number reference relates  
to the TPO Schedule.

Veteran tree buffer (15 x stem Ø)  
(as per standing advice produced by  
Natural Resource Wales)

Designated Ancient Woodland and buffer  
(15m offset, as per Natural Resource Wales  
woodland inventory, via open data  
publication)

Arboricultural BRAG Assessment

Based on quantitative and professional assessment.  
The ranking is defined as:

Black: Significant arboreal asset within development;

Red: High potential to constrain development;

Amber: Moderate potential to constrain development; and

Green: Low potential to constrain development

Construction Compound or Access Area

Arboricultural constraint based on providing a construction  
exclusion zone (CEZ):

Black: At all times, compound should avoid  
entering this area;

Red: In nearly all circumstances, compound  
should avoid entering this area;

Amber: In most circumstances, compound  
should avoid entering this area;

Green: Little or no arboricultural constraint  
which would affect compound location.

Cable Crossing Technique

Trenchless

Trenching / Trenchless

Trenched

Temporary protective fencing in accordance  
with Section 6.2 - BS5837:2012. See example,  
also shown within supporting report.

Temporary visual warning barrier. See  
example detail, also shown within supporting  
report.

NOTES:

Refer to RPS Tree Survey & Arboricultural Impact Assessment Report for  
further details

Survey based on a visual inspection from the ground and is not intended  
as a full arboricultural inspection.

Plan produced in accordance with recommendations set out in BS  
5837:2012. \*Trees in Relation to design, demolition and construction\*.

Due to legal protection afforded to breeding birds vegetation removal  
should not take place during the bird nesting period, generally, although  
not restricted to, March - August inclusive.

Survey based upon aerial photography, therefore tree locations should be  
deemed as approximate, and not digitally accurate.

Pedestrian/vehicular emergency access routes to be maintained at all  
times.

All protective fencing to be completed and approved by LPA / CA prior to  
commencement of any site works.

All works to conform with requirements of:  
BS 5837:2012 - Tree Works  
BS 5837:2012 - Trees in relation to design, demolition  
and construction

Rev	Description	By	CB	Date

Drawing Number:  
**7126**

**Project Name:**  
MONA OFFSHORE WIND PROJECT

**Drawing Title:**  
TREE AND HEDGEROW PROTECTION PLAN

**Scale**  
Scale@A0: 1:500  
0 50m

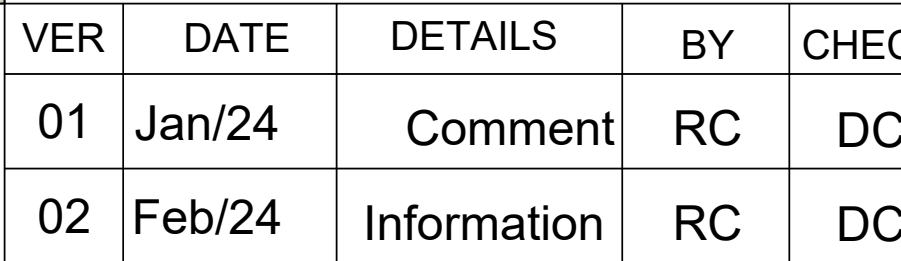
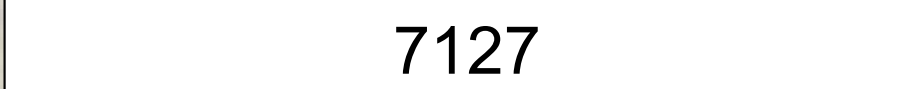
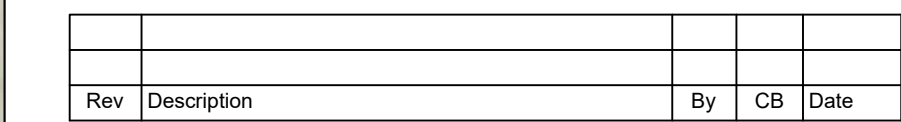
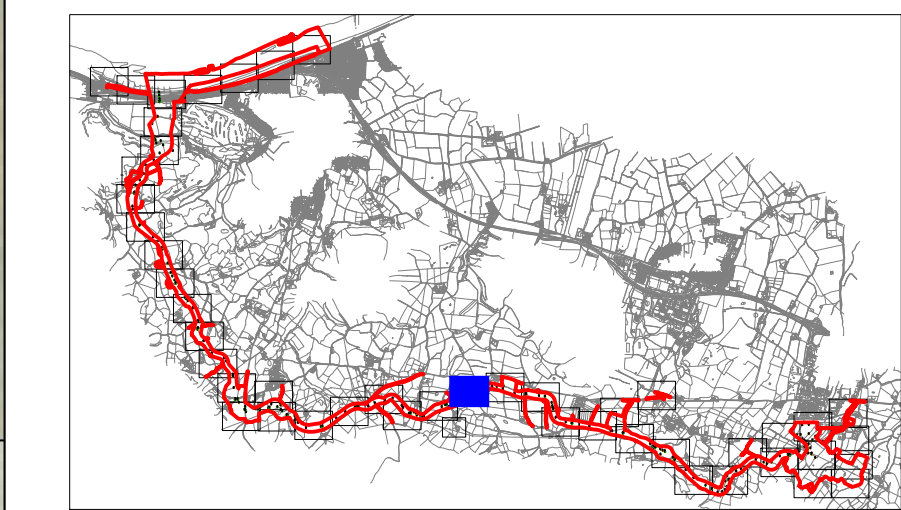
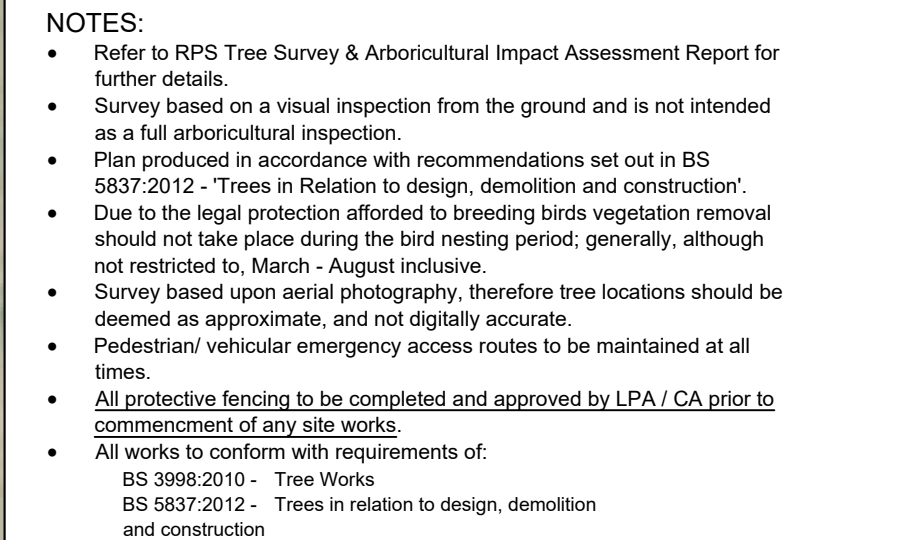
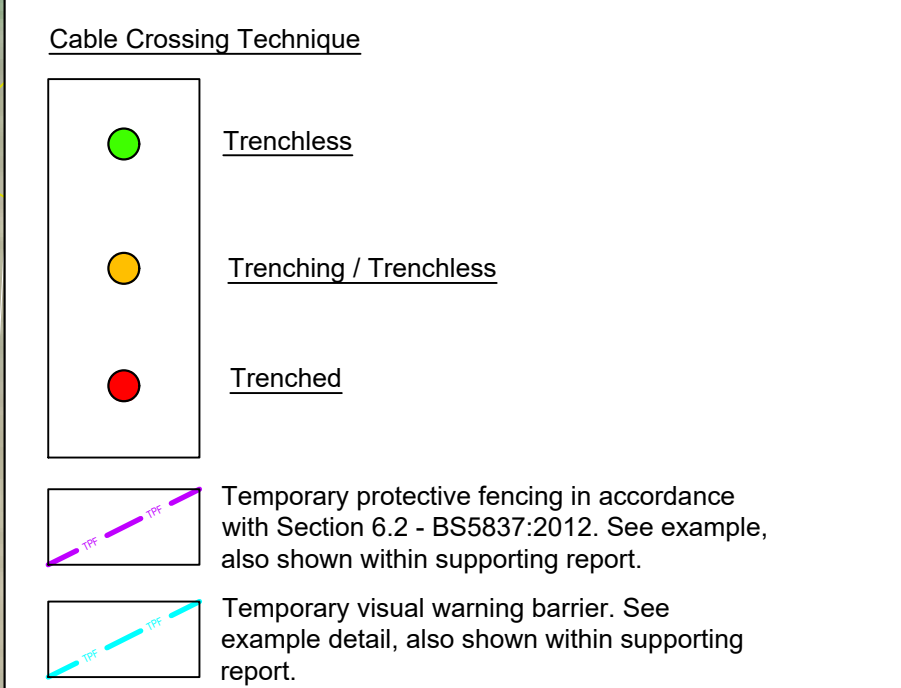
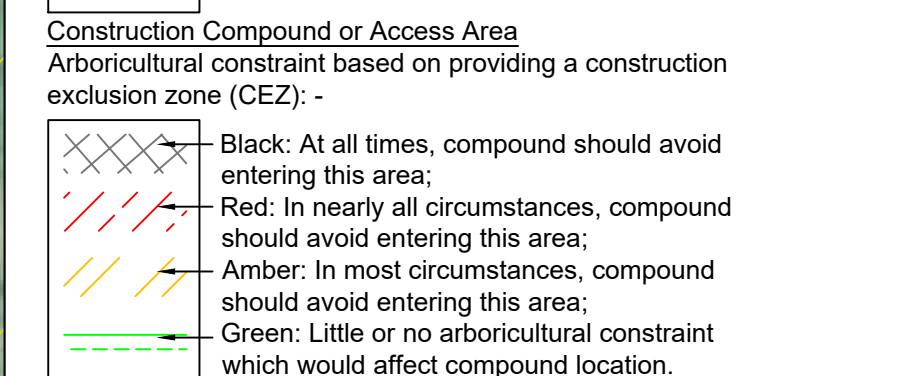
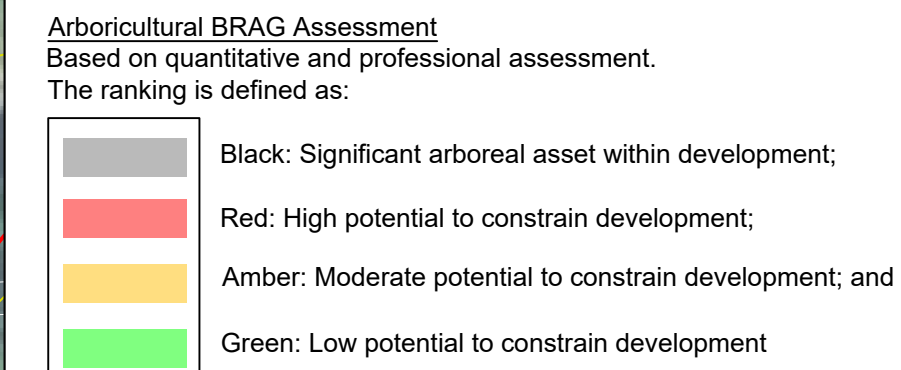
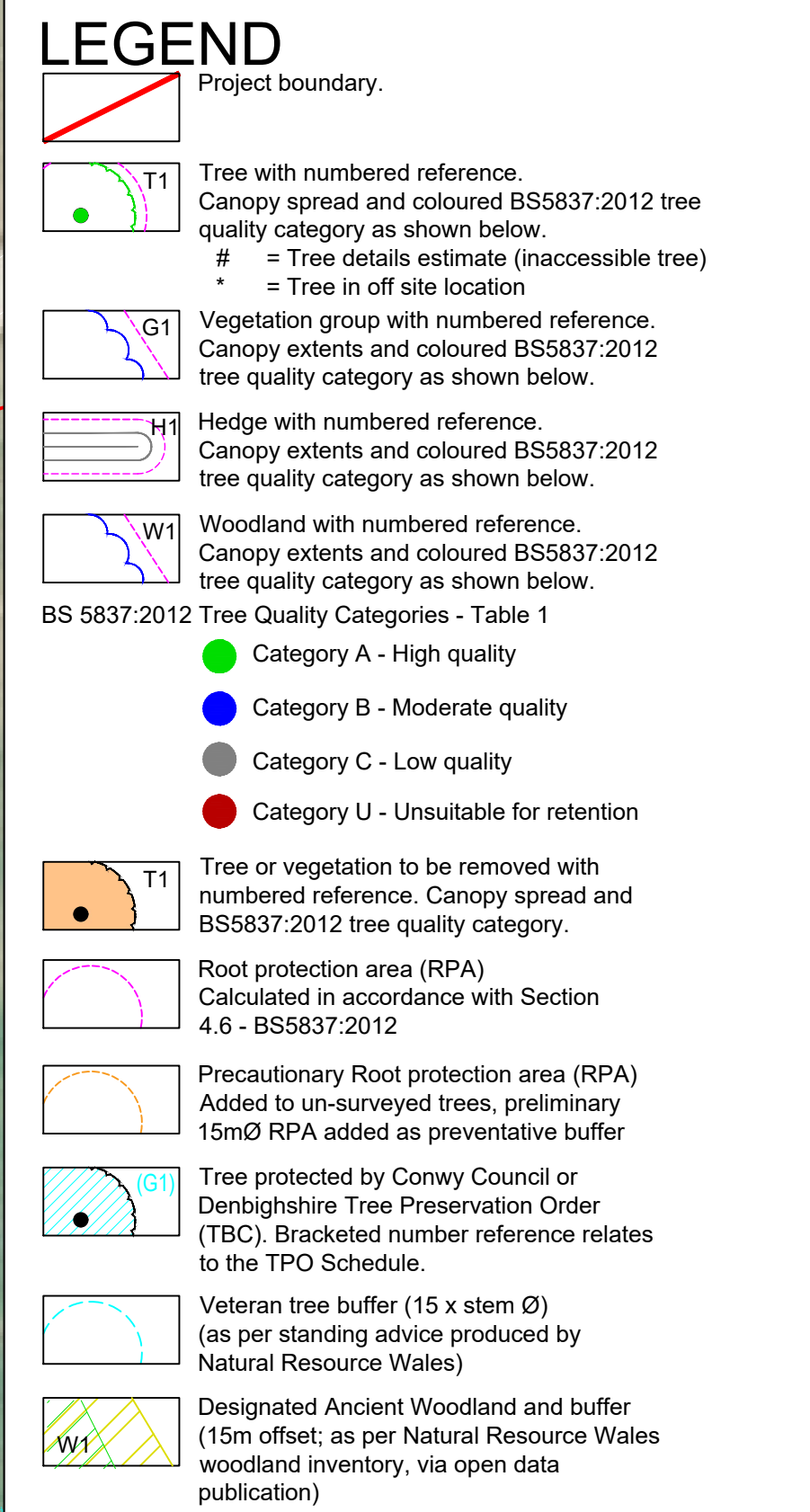
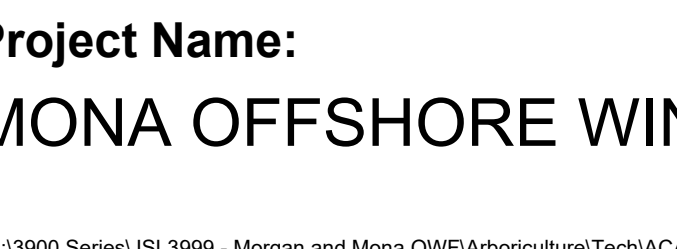
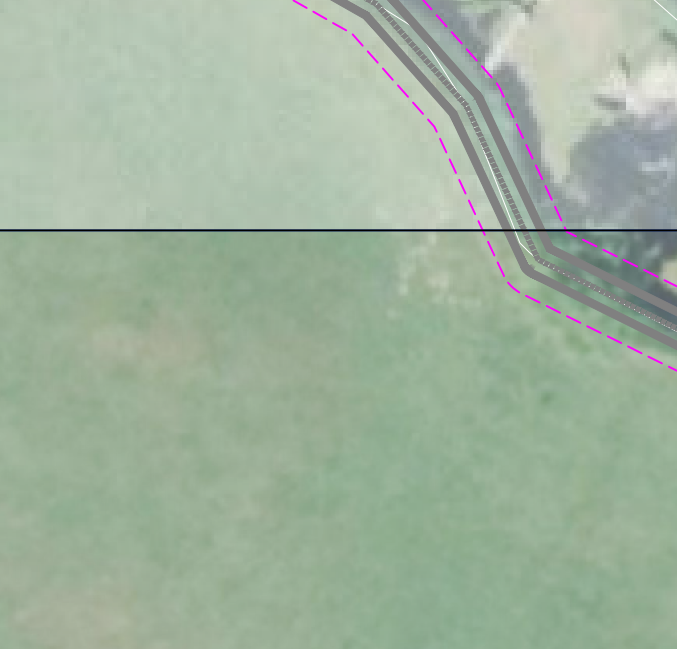
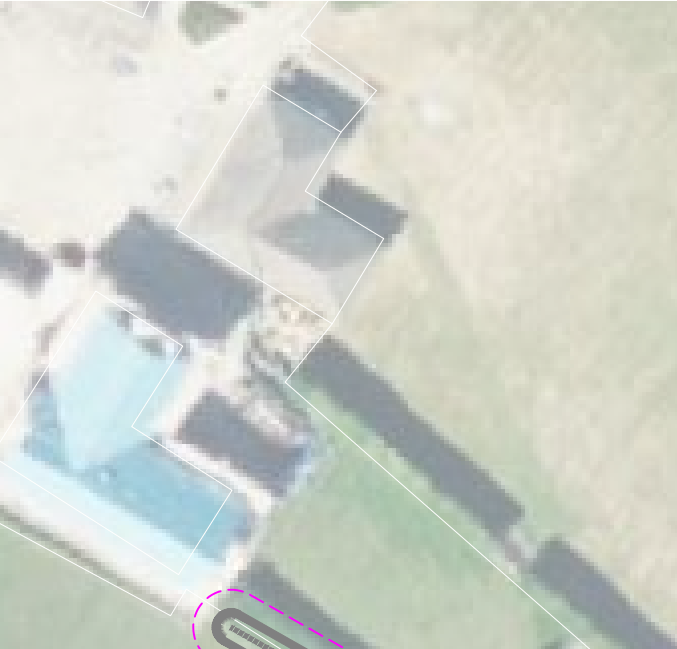
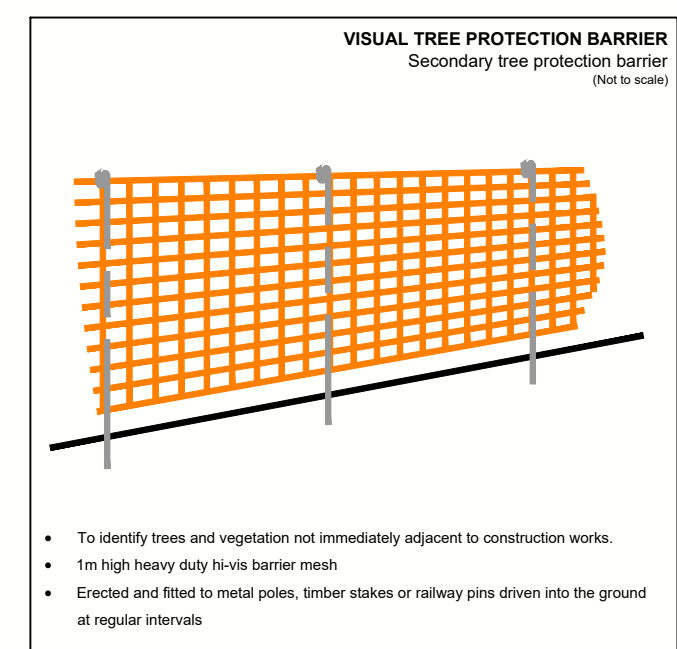
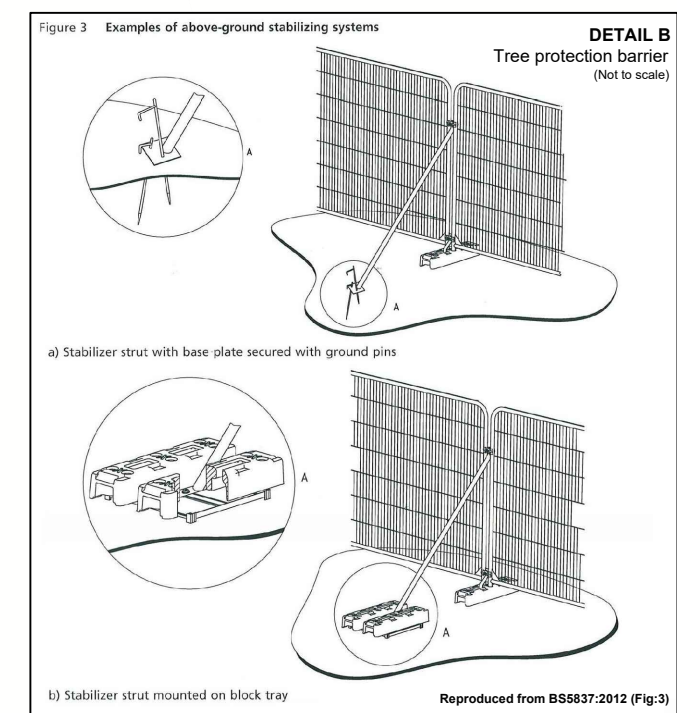
**Geodetic Information:**  
Datum: ETRS 1989  
Projection: British National Grid

**Data Sources:** Client

**Service Layer Credits:** Esri, HERE, Garmin, Intermap, increment P Corp., GEBCO, USGS, FAO, NPS, NRCAN, GeoBase, IGN, Kadaster NL, Ordnance Survey, Esri Japan, METI, Esri China (Hong Kong), (c) OpenStreetMap contributors, and the GIS User Community

VER	DATE	DETAILS	BY	CHECK
01	Jan/24	Comment	RC	DC
02	Feb/24	Information	RC	DC













### LEGEND

Project boundary.

Tree with numbered reference.  
Canopy spread and coloured BS5837:2012 tree quality category as shown below.  
■ = Tree details estimate (inaccessible tree)  
• = Tree in off site location

Vegetation group with numbered reference.  
Canopy extents and coloured BS5837:2012 tree quality category as shown below.

Hedge with numbered reference.  
Canopy extents and coloured BS5837:2012 tree quality category as shown below.

Woodland with numbered reference.  
Canopy extents and coloured BS5837:2012 tree quality category as shown below.

BS 5837:2012 Tree Quality Categories - Table 1  
Category A - High quality

Category B - Moderate quality

Category C - Low quality

Category U - Unsuitable for retention

Tree or vegetation to be removed with  
numbered reference. Canopy spread and  
BS5837:2012 tree quality category.

Root protection area (RPA)  
Calculated in accordance with Section  
4.6 - BS5837:2012

Precautionary Root protection area (RPA)  
Added to un-surveyed trees, preliminary  
15mØ RPA added as preventative buffer

Tree protected by Conwy Council or  
Denbighshire Tree Preservation Order  
(TBC). Bracketed number reference relates  
to the TPO Schedule.

Veteran tree buffer (15 x stem Ø)  
(as per standing advice produced by  
Natural Resource Wales)

Designated Ancient Woodland and buffer  
(15m offset, as per Natural Resource Wales  
woodland inventory, via open data  
publication)

Arboricultural BRAG Assessment  
Based on quantitative and professional assessment.  
The ranking is defined as:

Black: Significant arboreal asset within development;

Red: High potential to constrain development;

Amber: Moderate potential to constrain development; and

Green: Low potential to constrain development

Construction Compound or Access Area  
Arboricultural constraint based on providing a construction  
exclusion zone (CEZ).

Black: At all times, compound should avoid  
entering this area;

Red: In nearly all circumstances, compound  
should avoid entering this area;

Amber: In most circumstances, compound  
should avoid entering this area;

Green: Little or no arboricultural constraint  
which would affect compound location.

Trenchless

Trenching / Trenchless

Trenched

Temporary protective fencing in accordance  
with Section 6.2 - BS5837:2012. See example,  
also shown within supporting report.

Temporary visual warning barrier. See  
example detail, also shown within supporting  
report.

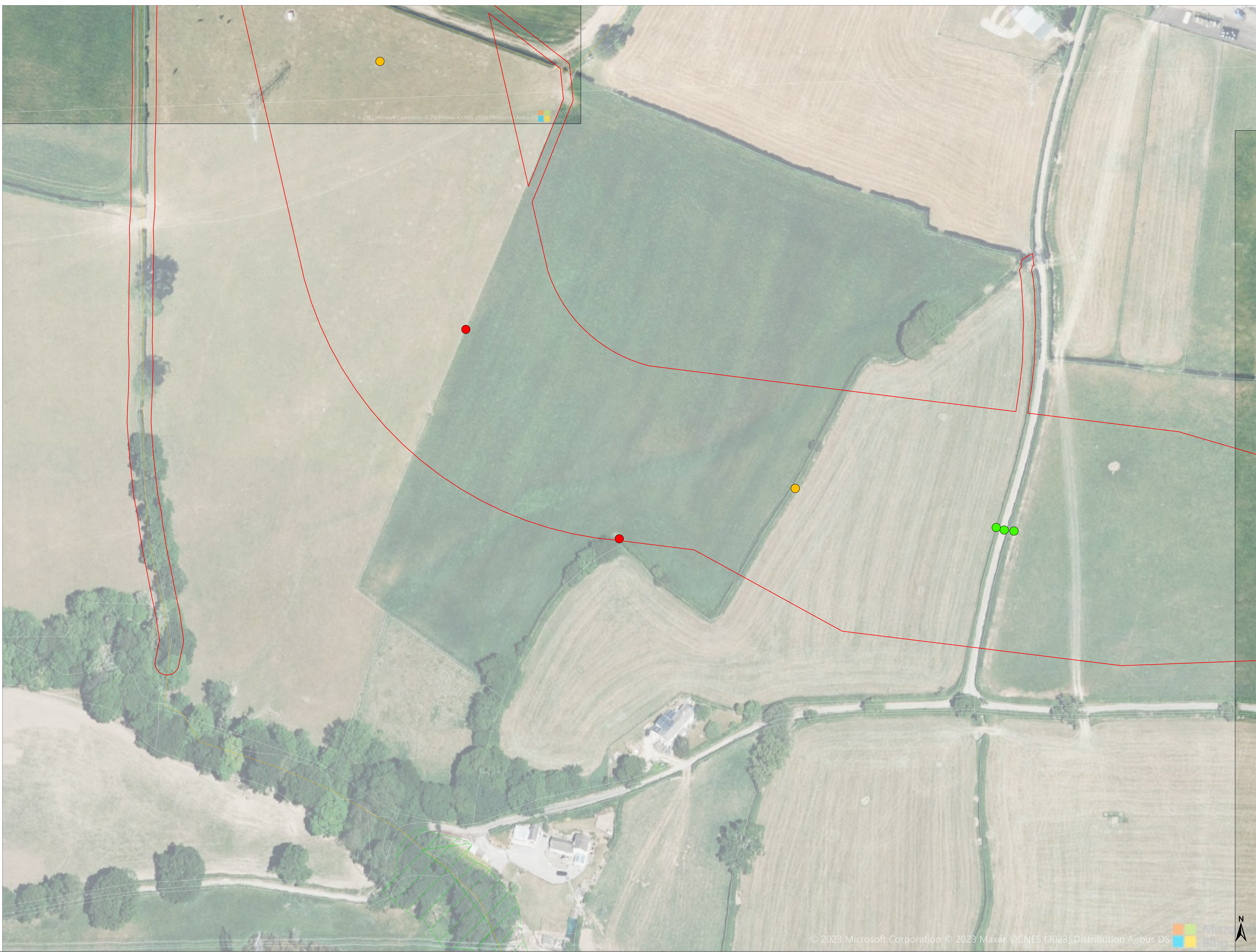
NOTES:  
• Refer to RPS Tree Survey & Arboricultural Impact Assessment Report for  
further details  
• Survey based on a visual inspection from the ground and is not intended  
as a full arboricultural inspection  
• Plan produced in accordance with recommendations set out in BS  
5837:2012 - "Trees in Relation to design, demolition and construction"  
• Due to the legal protection afforded to breeding birds vegetation removal  
should not take place during the bird nesting period, generally, although  
not restricted to, March - August inclusive.  
• Survey based upon aerial photography, therefore tree locations should be  
deemed as approximate, and not digitally accurate  
• Pedestrian/vehicular emergency access routes to be maintained at all  
times.  
• All protective fencing to be completed and approved by LPA / CA prior to  
commencement of any site works  
• All works to conform with requirements of:  
BS 5838:2010 - Tree Works  
BS 5837:2012 - Trees in relation to design, demolition  
and construction

Rev	Description	By	CB	Date

Partners in UK offshore wind

<b>Project Name:</b> MONA OFFSHORE WIND PROJECT		<b>Drawing Title:</b> TREE AND HEDGEROW PROTECTION PLAN		<b>Scale</b> Scale@A0: 1:500 		<b>Geodetic Information:</b> Datum: ETRS 1989 Projection: British National Grid		<b>Data Sources:</b> Client		<b>Service Layer Credits:</b> Esri, HERE, Garmin, Intermap, increment P Corp., GEBCO, USGS, FAO, NPS, NRCAN, GeoBase, IGN, Kadaster NL, Ordnance Survey, Esri Japan, METI, Esri China (Hong Kong), (c) OpenStreetMap contributors, and the GIS User Community		VER	DATE	DETAILS	BY	CHECK
												01	Jan/24	Comment	RC	DC
												02	Feb/24	Information	RC	DC





### LEGEND

Project boundary.

Tree with numbered reference.  
Canopy spread and coloured BS5837:2012 tree quality category as shown below.  
# = Tree details estimate (inaccessible tree)  
• = Tree in off site location

Vegetation group with numbered reference.  
Canopy extents and coloured BS5837:2012 tree quality category as shown below.

Hedge with numbered reference.  
Canopy extents and coloured BS5837:2012 tree quality category as shown below.

Woodland with numbered reference.  
Canopy extents and coloured BS5837:2012 tree quality category as shown below.

BS 5837:2012 Tree Quality Categories - Table 1  
Category A - High quality

Category B - Moderate quality

Category C - Low quality

Category U - Unsuitable for retention

Tree or vegetation to be removed with  
numbered reference. Canopy spread and  
BS5837:2012 tree quality category.

Root protection area (RPA)  
Calculated in accordance with Section  
4.6 - BS5837:2012

Precautionary Root protection area (RPA)  
Added to un-surveyed trees, preliminary  
15mØ RPA added as preventative buffer

Tree protected by Conwy Council or  
Denbighshire Tree Preservation Order  
(TBC). Bracketed number reference relates to  
the TPO Schedule.

Veteran tree buffer (15 x stem Ø)  
(as per standing advice produced by  
Natural Resource Wales)

Designated Ancient Woodland and buffer  
(15m offset, as per Natural Resource Wales  
woodland inventory, via open data  
publication)

Arboricultural BRAG Assessment  
Based on quantitative and professional assessment.  
The ranking is defined as:

Black: Significant arboreal asset within development;

Red: High potential to constrain development;

Amber: Moderate potential to constrain development; and

Green: Low potential to constrain development

Construction Compound or Access Area  
Arboricultural constraint based on providing a construction  
exclusion zone (CEZ):

Black: At all times, compound should avoid  
entering this area;

Red: In nearly all circumstances, compound  
should avoid entering this area;

Amber: In most circumstances, compound  
should avoid entering this area;

Green: Little or no arboricultural constraint  
which would affect compound location.

Cable Crossing Technique  
Trenchless

Trenching / Trenchless

Trenched

Temporary protective fencing in accordance  
with Section 6.2 - BS5837:2012. See example,  
also shown within supporting report.

Temporary visual warning barrier. See  
example detail, also shown within supporting  
report.

NOTES:  
• Refer to RPS Tree Survey & Arboricultural Impact Assessment Report for  
further details.  
• Survey based on a visual inspection from the ground and is not intended  
as a full arboricultural inspection.  
• Plan produced in accordance with recommendations set out in BS  
5837:2012 - 'Trees in Relation to design, demolition and construction'.  
• Due to the final protection afforded to breeding birds vegetation removal  
should not take place during the bird nesting period, generally, although  
not restricted to, March - August inclusive.  
• Survey based upon aerial photography, therefore tree locations should be  
deemed as approximate, and not digitally accurate.  
• Pedestrian/vehicular emergency access routes to be maintained at all  
times.  
• All protective fencing to be completed and approved by LPA / CA prior to  
commencement of any site works.  
• All works to conform with requirements of:  
BS 5838:2010 - Tree Works  
BS 5837:2012 - Trees in relation to design, demolition  
and construction

Rev	Description	By	CB	Date

Partners in UK offshore wind

Drawing Number:  
  
7130

VER	DATE	DETAILS	BY	CHECK
01	Jan/24	Comment	RC	DC
02	Feb/24	Information	RC	DC

**Project Name:**  
MONA OFFSHORE WIND PROJECT

**Drawing Title:**  
TREE AND HEDGEROW PROTECTION PLAN

**Scale**  
Scale@A0: 1:500

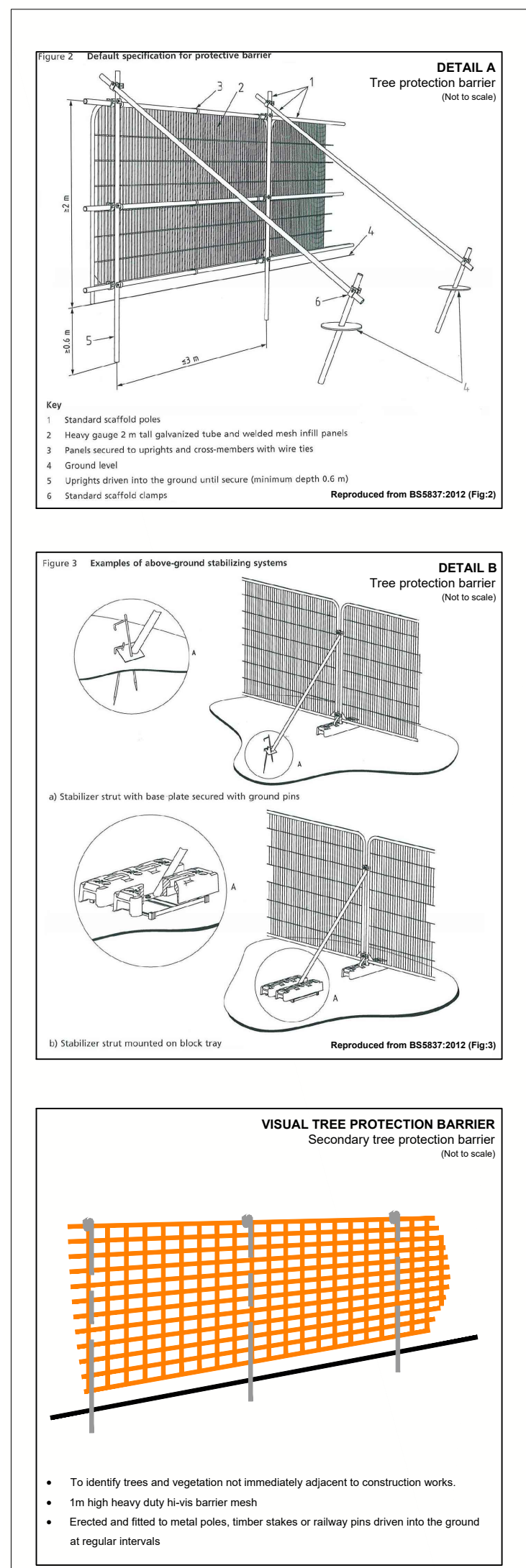
**Geodetic Information:**  
Datum: ETRS 1989  
Projection: British National Grid

**Data Sources:** Client

**Service Layer Credits:** Esri, HERE, Garmin, Intermap, increment P Corp., GEBCO, USGS, FAO, NPS, NRCAN, GeoBase, IGN, Kadaster NL, Ordnance Survey, Esri Japan, METI, Esri China (Hong Kong), (c) OpenStreetMap contributors, and the GIS User Community

P:\3990 Series\JSL3999 - Morgan and Mone O&W\Arboriculture\Tech\ACAD\Current\JSL3999\_800C\_TPP\_Cable\_Route.dwg  
P:\3990 Series\JSL3999 - Morgan and Mone O&W\Arboriculture\Tech\ACAD\Current\JSL3999\_800C\_TPP\_Cable\_Route.dwg





## LEGEND

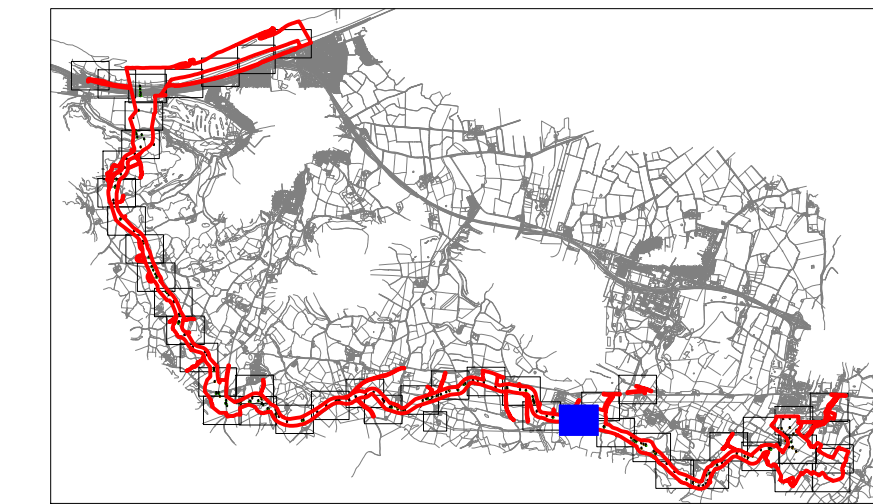
- Project boundary.
- Tree with numbered reference.  
Canopy spread and coloured BS5837:2012 tree quality category as shown below.  
# = Tree details estimate (inaccessible tree)  
+ = Tree in off site location
- Vegetation group with numbered reference.  
Canopy extents and coloured BS5837:2012 tree quality category as shown below.
- Hedge with numbered reference.  
Canopy extents and coloured BS5837:2012 tree quality category as shown below.
- Woodland with numbered reference.  
Canopy extents and coloured BS5837:2012 tree quality category as shown below.
- BS 5837:2012 Tree Quality Categories - Table 1
- Category A - High quality
  - Category B - Moderate quality
  - Category C - Low quality
  - Category U - Unsuitable for retention
- Tree or vegetation to be removed with numbered reference. Canopy spread and BS5837:2012 tree quality category.
- Root protection area (RPA)  
Calculated in accordance with Section 4.6 - BS5837:2012
- Precautionary Root protection area (RPA)  
Added to un-surveyed trees, preliminary 15mØ RPA added as preventative buffer
- Tree protected by Conwy Council or Denbighshire Tree Preservation Order (TBC). Bracketed number reference relates to the TPO Schedule.
- Veteran tree buffer (15 x stem Ø)  
(as per standing advice produced by Natural Resource Wales)
- Designated Ancient Woodland and buffer (15m offset, as per Natural Resource Wales woodland inventory, via open data publication)

- Arboricultural BRAG Assessment**  
Based on quantitative and professional assessment.  
The ranking is defined as:
- Black: Significant arboreal asset within development;
  - Red: High potential to constrain development;
  - Amber: Moderate potential to constrain development; and
  - Green: Low potential to constrain development

- Construction Compound or Access Area**  
Arboricultural constraint based on providing a construction exclusion zone (CEZ).
- Black: At all times, compound should avoid entering this area;
  - Red: In nearly all circumstances, compound should avoid entering this area;
  - Amber: In most circumstances, compound should avoid entering this area;
  - Green: Little or no arboricultural constraint which would affect compound location.

- Cable Crossing Technique**
- Trenchless
  - Trenching / Trenchless
  - Trenched
- Temporary protective fencing in accordance with Section 6.2 - BS5837:2012. See example, also shown within supporting report.
- Temporary visual warning barrier. See example detail, also shown within supporting report.

- NOTES:**
- Refer to RPS Tree Survey & Arboricultural Impact Assessment Report for further details.
  - Survey based on a visual inspection from the ground and is not intended as a full arboricultural inspection.
  - Plan produced in accordance with recommendations set out in BS 5837:2012 - "Trees in Relation to design, demolition and construction".
  - Due to the level of protection afforded to breeding birds vegetation removal should not take place during the bird nesting period, generally, although not restricted to, March - August inclusive.
  - Survey based upon aerial photography, therefore tree locations should be deemed as approximate, and not digitally accurate.
  - Pedestrian/vehicular emergency access routes to be maintained at all times.
  - All protective fencing to be completed and approved by LPA / CA prior to commencement of any site works.
  - All works to conform with requirements of:  
BS 5837:2012 - Tree Works  
BS 5837:2012 - Trees in relation to design, demolition and construction



Rev	Description	By	CB	Date



Drawing Number:

7131

**Project Name:**  
MONA OFFSHORE WIND PROJECT

**Drawing Title:**  
TREE AND HEDGEROW PROTECTION PLAN

**Scale**  
Scale@A0: 1:500  
0 50m

**Geodetic Information:**  
Datum: ETRS 1989  
Projection: British National Grid

**Data Sources:** Client

**Service Layer Credits:** Esri, HERE, Garmin, Intermap, increment P Corp., GEBCO, USGS, FAO, NPS, NRCAN, GeoBase, IGN, Kadaster NL, Ordnance Survey, Esri Japan, METI, Esri China (Hong Kong), (c) OpenStreetMap contributors, and the GIS User Community

VER	DATE	DETAILS	BY	CHECK
01	Jan/24	Comment	RC	DC
02	Feb/24	Information	RC	DC





### LEGEND

Project boundary.

Tree with numbered reference.  
Canopy spread and coloured BS5837:2012 tree quality category as shown below.  
# = Tree details estimate (inaccessible tree)  
• = Tree in off site location

Vegetation group with numbered reference.  
Canopy extents and coloured BS5837:2012 tree quality category as shown below.

Hedge with numbered reference.  
Canopy extents and coloured BS5837:2012 tree quality category as shown below.

Woodland with numbered reference.  
Canopy extents and coloured BS5837:2012 tree quality category as shown below.

BS 5837:2012 Tree Quality Categories - Table 1  
Category A - High quality

Category B - Moderate quality

Category C - Low quality

Category U - Unsuitable for retention

Tree or vegetation to be removed with numbered reference. Canopy spread and BS5837:2012 tree quality category.

Root protection area (RPA)  
Calculated in accordance with Section 4.6 - BS5837:2012

Precautionary Root protection area (RPA)  
Added to un-surveyed trees, preliminary 15mØ RPA added as preventative buffer

Tree protected by Conwy Council or Denbighshire Tree Preservation Order (TBC). Bracketted number reference relates to the TPO Schedule.

Veteran tree buffer (15 x stem Ø)  
(as per standing advice produced by Natural Resource Wales)

Designated Ancient Woodland and buffer (15m offset, as per Natural Resource Wales woodland inventory, via open data publication)

**Arboricultural BRAG Assessment**  
Based on quantitative and professional assessment.  
The ranking is defined as:

Black: Significant arboreal asset within development;

Red: High potential to constrain development;

Amber: Moderate potential to constrain development; and

Green: Low potential to constrain development

**Construction Compound or Access Area**  
Arboricultural constraint based on providing a construction exclusion zone (CEZ):

Black: At all times, compound should avoid entering this area;

Red: In nearly all circumstances, compound should avoid entering this area;

Amber: In most circumstances, compound should avoid entering this area;

Green: Little or no arboricultural constraint which would affect compound location.

**Cable Crossing Technique**

Trenchless

Trenching / Trenchless

Trenched

Temporary protective fencing in accordance with Section 6.2 - BS5837:2012. See example, also shown within supporting report.

Temporary visual warning barrier. See example detail, also shown within supporting report.

**NOTES:**

- Refer to RPS Tree Survey & Arboricultural Impact Assessment Report for further details
- Survey based on a visual inspection from the ground and is not intended as a full arboricultural inspection
- Plan produced in accordance with recommendations set out in BS 5837:2012 - 'Trees in Relation to design, demolition and construction'
- Due to the level protection afforded to breeding birds vegetation removal should not take place during the bird nesting period, generally, although not restricted to, March - August inclusive.
- Survey based upon aerial photography, therefore tree locations should be deemed as approximate, and not digitally accurate
- Pedestrian/vehicular emergency access routes to be maintained at all times
- All protective fencing to be completed and approved by LPA / CA prior to commencement of any site works
- All works to conform with requirements of:  
BS 5838:2010 - Tree Works  
BS 5837:2012 - Trees in relation to design, demolition and construction

Partners in UK offshore wind

Drawing Number:  
**7132**





### LEGEND

Project boundary.

Tree with numbered reference.  
Canopy spread and coloured BS5837:2012 tree quality category as shown below.  
# = Tree details estimate (inaccessible tree)  
• = Tree in off site location

Vegetation group with numbered reference.  
Canopy extents and coloured BS5837:2012 tree quality category as shown below.

Hedge with numbered reference.  
Canopy extents and coloured BS5837:2012 tree quality category as shown below.

Woodland with numbered reference.  
Canopy extents and coloured BS5837:2012 tree quality category as shown below.

BS 5837:2012 Tree Quality Categories - Table 1

Category A - High quality

Category B - Moderate quality

Category C - Low quality

Category U - Unsuitable for retention

Tree or vegetation to be removed with numbered reference. Canopy spread and BS5837:2012 tree quality category.

Root protection area (RPA)  
Calculated in accordance with Section 4.6 - BS5837:2012

Precautionary Root protection area (RPA)  
Added to un-surveyed trees, preliminary 15mØ RPA added as preventative buffer

Tree protected by Conwy Council or Denbighshire Tree Preservation Order (TBC). Bracketed number reference relates to the TPO Schedule.

Veteran tree buffer (15 x stem Ø)  
(as per standing advice produced by Natural Resource Wales)

Designated Ancient Woodland and buffer (15m offset, as per Natural Resource Wales woodland inventory, via open data publication)

Arboricultural BRAG Assessment

Based on quantitative and professional assessment. The ranking is defined as:

Black: Significant arboreal asset within development;

Red: High potential to constrain development;

Amber: Moderate potential to constrain development; and

Green: Low potential to constrain development

Construction Compound or Access Area

Arboricultural constraint based on providing a construction exclusion zone (CEZ):

Black: At all times, compound should avoid entering this area;

Red: In nearly all circumstances, compound should avoid entering this area;

Amber: In most circumstances, compound should avoid entering this area;

Green: Little or no arboricultural constraint which would affect compound location.

Cable Crossing Technique

Trenchless

Trenching / Trenchless

Trenched

Temporary protective fencing in accordance with Section 6.2 - BS5837:2012. See example, also shown within supporting report.

Temporary visual warning barrier. See example detail, also shown within supporting report.

NOTES:

- Refer to RPS Tree Survey & Arboricultural Impact Assessment Report for further details.
- Survey based on a visual inspection from the ground and is not intended as a full arboricultural inspection.
- Plan produced in accordance with recommendations set out in BS 5837:2012 - 'Trees in Relation to design, demolition and construction'.
- Due to the legal protection afforded to breeding birds vegetation removal should not take place during the bird nesting period, generally, although not restricted to, March - August inclusive.
- Survey based upon aerial photography, therefore tree locations should be deemed as approximate, and not digitally accurate.
- Pedestrian/ vehicular emergency access routes to be maintained at all times.
- All protective fencing to be completed and approved by LPA / CA prior to commencement of any site works.
- All works to conform with requirements of:  
BS 5837:2012 - Tree Works  
BS 5837:2012 - Trees in relation to design, demolition and construction

Rev	Description	By	CB	Date

Partners in UK offshore wind

Drawing Number:  
**7133**

VER	DATE	DETAILS	BY	CHECK
01	Jan/24	Comment	RC	DC
02	Feb/24	Information	RC	DC

P:\3990 Series\USL3999 - Morgan and Monie OMF\Arboriculture\Tech\ACAD\Current\USL3999\_800C\_TPP\_Cable\_Route.dwg  
P:\3990 Series\USL3999 - Morgan and Monie OMF\Arboriculture\Tech\ACAD\Current\USL3999\_800C\_TPP\_Cable\_Route.dwg





### LEGEND

Project boundary.

Tree with numbered reference.  
Canopy spread and coloured BS5837:2012 tree quality category as shown below.  
# = Tree details estimate (inaccessible tree)  
• = Tree in off site location

Vegetation group with numbered reference.  
Canopy extents and coloured BS5837:2012 tree quality category as shown below.

Hedge with numbered reference.  
Canopy extents and coloured BS5837:2012 tree quality category as shown below.

Woodland with numbered reference.  
Canopy extents and coloured BS5837:2012 tree quality category as shown below.

BS 5837:2012 Tree Quality Categories - Table 1

Category A - High quality

Category B - Moderate quality

Category C - Low quality

Category U - Unsuitable for retention

Tree or vegetation to be removed with numbered reference. Canopy spread and BS5837:2012 tree quality category.

Root protection area (RPA)  
Calculated in accordance with Section 4.6 - BS5837:2012

Precautionary Root protection area (RPA)  
Added to un-surveyed trees, preliminary 15mØ RPA added as preventative buffer

Tree protected by Conwy Council or Denbighshire Tree Preservation Order (TBC). Bracketed number reference relates to the TPO Schedule.

Veteran tree buffer (15 x stem Ø)  
(as per standing advice produced by Natural Resource Wales)

Designated Ancient Woodland and buffer (15m offset, as per Natural Resource Wales woodland inventory, via open data publication)

Arboricultural BRAG Assessment

Based on quantitative and professional assessment. The ranking is defined as:

Black: Significant arboreal asset within development;

Red: High potential to constrain development;

Amber: Moderate potential to constrain development; and

Green: Low potential to constrain development

Construction Compound or Access Area

Arboricultural constraint based on providing a construction exclusion zone (CEZ):

Black: At all times, compound should avoid entering this area;

Red: In nearly all circumstances, compound should avoid entering this area;

Amber: In most circumstances, compound should avoid entering this area;

Green: Little or no arboricultural constraint which would affect compound location.

Cable Crossing Technique

Trenchless

Trenching / Trenchless

Trenched

Temporary protective fencing in accordance with Section 6.2 - BS5837:2012. See example, also shown within supporting report.

Temporary visual warning barrier. See example detail, also shown within supporting report.

NOTES:

- Refer to RPS Tree Survey & Arboricultural Impact Assessment Report for further details.
- Survey based on a visual inspection from the ground and is not intended as a full arboricultural inspection.
- Plan produced in accordance with recommendations set out in BS 5837:2012 - 'Trees in Relation to design, demolition and construction'.
- Due to the legal protection afforded to breeding birds vegetation removal should not take place during the bird nesting period, generally, although not restricted to, March - August inclusive.
- Survey based upon aerial photography, therefore tree locations should be deemed as approximate, and not digitally accurate.
- Pedestrian/vehicular emergency access routes to be maintained at all times.
- All protective fencing to be completed and approved by LPA / CA prior to commencement of any site works.
- All works to conform with requirements of:  
BS 3998:2010 - Tree Works  
BS 5837:2012 - Trees in relation to design, demolition and construction

Partners in UK offshore wind

Drawing Number:  
  
7134





LEGEND

- Project boundary.
- Tree with numbered reference.  
Canopy spread and coloured BS5837:2012 tree quality category as shown below.  
# = Tree details estimate (inaccessible tree)  
• = Tree in off site location
- Vegetation group with numbered reference.  
Canopy extents and coloured BS5837:2012 tree quality category as shown below.
- Hedge with numbered reference.  
Canopy extents and coloured BS5837:2012 tree quality category as shown below.
- Woodland with numbered reference.  
Canopy extents and coloured BS5837:2012 tree quality category as shown below.
- BS 5837:2012 Tree Quality Categories - Table 1
- Category A - High quality
- Category B - Moderate quality
- Category C - Low quality
- Category U - Unsuitable for retention
- Tree or vegetation to be removed with numbered reference. Canopy spread and BS5837:2012 tree quality category.
- Root protection area (RPA)  
Calculated in accordance with Section 4.6 - BS5837:2012
- Precautionary Root protection area (RPA)  
Added to un-surveyed trees, preliminary 15mØ RPA added as preventative buffer
- Tree protected by Conwy Council or Denbighshire Tree Preservation Order (TBC). Bracketed number reference relates to the TPO Schedule.
- Veteran tree buffer (15 x stem Ø)  
(as per standing advice produced by Natural Resource Wales)
- Designated Ancient Woodland and buffer (15m offset, as per Natural Resource Wales woodland inventory, via open data publication)

Arboricultural BRAG Assessment  
Based on quantitative and professional assessment.  
The ranking is defined as:

Black: Significant arboreal asset within development;

Red: High potential to constrain development;

Amber: Moderate potential to constrain development; and

Green: Low potential to constrain development

Construction Compound or Access Area  
Arboricultural constraint based on providing a construction exclusion zone (CEZ):

Black: At all times, compound should avoid entering this area;

Red: In nearly all circumstances, compound should avoid entering this area;

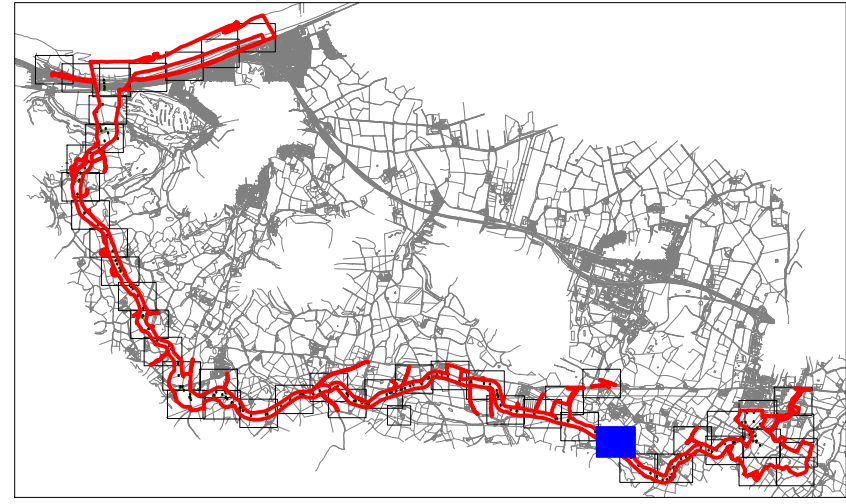
Amber: In most circumstances, compound should avoid entering this area;

Green: Little or no arboricultural constraint which would affect compound location.

- Cable Crossing Technique
- Trenchless
- Trenching / Trenchless
- Trenched
- Temporary protective fencing in accordance with Section 6.2 - BS5837:2012. See example, also shown within supporting report.
- Temporary visual warning barrier. See example detail, also shown within supporting report.

NOTES:

- Refer to RPS Tree Survey & Arboricultural Impact Assessment Report for further details
- Survey based on a visual inspection from the ground and is not intended as a full arboricultural inspection
- Plan produced in accordance with recommendations set out in BS 5837:2012 - "Trees in Relation to design, demolition and construction"
- Due to the rapid protection afforded to breeding birds vegetation removal should not take place during the bird nesting period, generally, although not restricted to, March - August inclusive.
- Survey based upon aerial photography, therefore tree locations should be deemed as approximate, and not digitally accurate
- Pedestrian/vehicular emergency access routes to be maintained at all times.
- All protective fencing to be completed and approved by LPA / CA prior to commencement of any site works
- All works to conform with requirements of:  
BS 3698:2010 - Tree Works  
BS 5837:2012 - Trees in relation to design, demolition and construction



Rev	Description	By	CB	Date



Drawing Number:

7135

Project Name:  
MONA OFFSHORE WIND PROJECT

Drawing Title:  
TREE AND HEDGEROW PROTECTION PLAN

Scale  
Scale@A0: 1:500  
0 50m

Geodetic Information:  
Datum: ETRS 1989  
Projection: British National Grid

Data Sources: Client

Service Layer Credits: Esri, HERE, Garmin, Intermap, increment P Corp., GEBCO, USGS, FAO, NPS, NRCAN, GeoBase, IGN, Kadaster NL, Ordnance Survey, Esri Japan, METI, Esri China (Hong Kong), (c) OpenStreetMap contributors, and the GIS User Community

VER	DATE	DETAILS	BY	CHECK
01	Jan/24	Comment	RC	DC
02	Feb/24	Information	RC	DC





### LEGEND

Project boundary.

Tree with numbered reference.  
Canopy spread and coloured BS5837:2012 tree quality category as shown below.  
# = Tree details estimate (inaccessible tree)  
+ = Tree in off site location

Vegetation group with numbered reference.  
Canopy extents and coloured BS5837:2012 tree quality category as shown below.

Hedge with numbered reference.  
Canopy extents and coloured BS5837:2012 tree quality category as shown below.

Woodland with numbered reference.  
Canopy extents and coloured BS5837:2012 tree quality category as shown below.

BS 5837:2012 Tree Quality Categories - Table 1

Category A - High quality

Category B - Moderate quality

Category C - Low quality

Category U - Unsuitable for retention

Tree or vegetation to be removed with numbered reference. Canopy spread and BS5837:2012 tree quality category.

Root protection area (RPA)  
Calculated in accordance with Section 4.6 - BS5837:2012

Precautionary Root protection area (RPA)  
Added to un-surveyed trees, preliminary 15mØ RPA added as preventative buffer

Tree protected by Conwy Council or Denbighshire Tree Preservation Order (TBC). Bracketed number reference relates to the TPO Schedule.

Veteran tree buffer (15 x stem Ø)  
(as per standing advice produced by Natural Resource Wales)

Designated Ancient Woodland and buffer (15m offset, as per Natural Resource Wales woodland inventory, via open data publication)

Arboricultural BRAG Assessment

Based on quantitative and professional assessment. The ranking is defined as:

Black: Significant arboreal asset within development;

Red: High potential to constrain development;

Amber: Moderate potential to constrain development; and

Green: Low potential to constrain development

Construction Compound or Access Area

Arboricultural constraint based on providing a construction exclusion zone (CEZ):

Black: At all times, compound should avoid entering this area;

Red: In nearly all circumstances, compound should avoid entering this area;

Amber: In most circumstances, compound should avoid entering this area;

Green: Little or no arboricultural constraint which would affect compound location.

Cable Crossing Technique

Trenchless

Trenching / Trenchless

Trenched

Temporary protective fencing in accordance with Section 6.2 - BS5837:2012. See example, also shown within supporting report.

Temporary visual warning barrier. See example detail, also shown within supporting report.

NOTES:

- Refer to RPS Tree Survey & Arboricultural Impact Assessment Report for further details
- Survey based on a visual inspection from the ground and is not intended as a full arboricultural inspection
- Plan produced in accordance with recommendations set out in BS 5837:2012 - "Trees in Relation to design, demolition and construction"
- Due to the legal protection afforded to breeding birds vegetation removal should not take place during the bird nesting period, generally, although not restricted to, March - August inclusive.
- Survey based upon aerial photography, therefore tree locations should be deemed as approximate, and not digitally accurate
- Pedestrian/vehicular emergency access routes to be maintained at all times
- All protective fencing to be completed and approved by LPA / CA prior to commencement of any site works
- All works to conform with requirements of:  
BS 3698:2010 - Tree Works  
BS 5837:2012 - Trees in relation to design, demolition and construction

Rev	Description	By	CB	Date

Partners in UK offshore wind

Drawing Number:  
  
7136





LEGEND

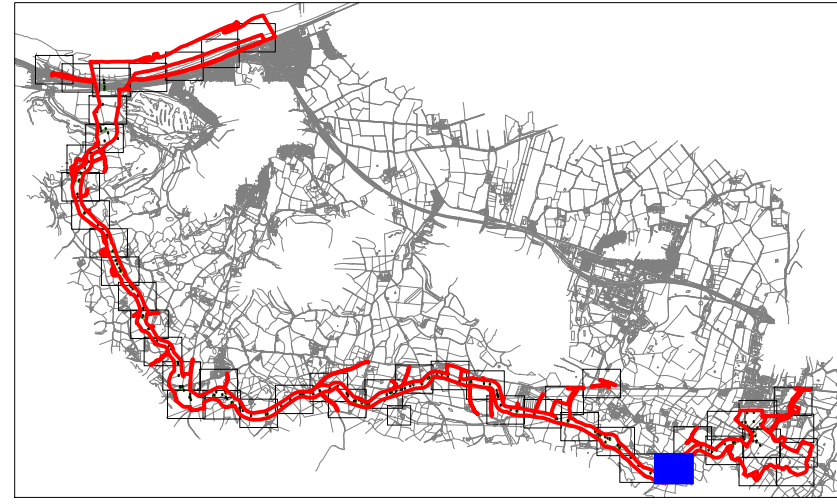
- Project boundary.
- Tree with numbered reference.  
Canopy spread and coloured BS5837:2012 tree quality category as shown below.  
# = Tree details estimate (inaccessible tree)  
+ = Tree in off site location
- Vegetation group with numbered reference.  
Canopy extents and coloured BS5837:2012 tree quality category as shown below.
- Hedge with numbered reference.  
Canopy extents and coloured BS5837:2012 tree quality category as shown below.
- Woodland with numbered reference.  
Canopy extents and coloured BS5837:2012 tree quality category as shown below.
- BS 5837:2012 Tree Quality Categories - Table 1
- Category A - High quality
- Category B - Moderate quality
- Category C - Low quality
- Category U - Unsuitable for retention
- Tree or vegetation to be removed with numbered reference. Canopy spread and BS5837:2012 tree quality category.
- Root protection area (RPA)  
Calculated in accordance with Section 4.6 - BS5837:2012
- Precautionary Root protection area (RPA)  
Added to un-surveyed trees, preliminary 15mØ RPA added as preventative buffer
- Tree protected by Conwy Council or Denbighshire Tree Preservation Order (TBC). Bracketted number reference relates to the TPO Schedule.
- Veteran tree buffer (15 x stem Ø)  
(as per standing advice produced by Natural Resource Wales)
- Designated Ancient Woodland and buffer (15m offset, as per Natural Resource Wales woodland inventory, via open data publication)

- Arboricultural BRAG Assessment  
Based on quantitative and professional assessment.  
The ranking is defined as:
- Black: Significant arboreal asset within development.
- Red: High potential to constrain development.
- Amber: Moderate potential to constrain development; and
- Green: Low potential to constrain development

- Construction Compound or Access Area  
Arboricultural constraint based on providing a construction exclusion zone (CEZ).
- Black: At all times, compound should avoid entering this area;  
Red: In nearly all circumstances, compound should avoid entering this area;  
Amber: In most circumstances, compound should avoid entering this area;  
Green: Little or no arboricultural constraint which would affect compound location.

- Cable Crossing Technique
- Trenchless
- Trenching / Trenchless
- Trenched
- Temporary protective fencing in accordance with Section 6.2 - BS5837:2012. See example, also shown within supporting report.
- Temporary visual warning barrier. See example detail, also shown within supporting report.

- NOTES:
- Refer to RPS Tree Survey & Arboricultural Impact Assessment Report for further details
  - Survey based on a visual inspection from the ground and is not intended as a full arboricultural inspection
  - Plan produced in accordance with recommendations set out in BS 5837:2012 - 'Trees in Relation to design, demolition and construction'
  - Due to legal protection afforded to breeding birds vegetation removal should not take place during the bird nesting period; generally, although not restricted to, March - August inclusive.
  - Survey based upon aerial photography, therefore tree locations should be deemed as approximate, and not digitally accurate
  - Pedestrian/vehicular emergency access routes to be maintained at all times.
  - All protective fencing to be completed and approved by LPA / CA prior to commencement of any site works
  - All works to conform with requirements of:  
BS 3698:2010 - Tree Works  
BS 5837:2012 - Trees in relation to design, demolition and construction



Rev	Description	By	CB	Date



Drawing Number:

7137

VER	DATE	DETAILS	BY	CHECK
01	Jan/24	Comment	RC	DC
02	Feb/24	Information	RC	DC

Project Name:  
MONA OFFSHORE WIND PROJECT

Drawing Title:  
TREE AND HEDGEROW PROTECTION PLAN

Scale  
Scale@A0: 1:500  
0 50m

Geodetic Information:  
Datum: ETRS 1989  
Projection: British National Grid

Data Sources: Client

Service Layer Credits: Esri, HERE, Garmin, Intermap, increment P Corp., GEBCO, USGS, FAO, NPS, NRCAN, GeoBase, IGN, Kadaster NL, Ordnance Survey, Esri Japan, METI, Esri China (Hong Kong), (c) OpenStreetMap contributors, and the GIS User Community





### LEGEND

Project boundary.

Tree with numbered reference.  
Canopy spread and coloured BS5837:2012 tree quality category as shown below.  
■ = Tree details estimate (inaccessible tree)  
● = Tree in off site location

Vegetation group with numbered reference.  
Canopy extents and coloured BS5837:2012 tree quality category as shown below.

Hedge with numbered reference.  
Canopy extents and coloured BS5837:2012 tree quality category as shown below.

Woodland with numbered reference.  
Canopy extents and coloured BS5837:2012 tree quality category as shown below.

BS 5837:2012 Tree Quality Categories - Table 1

Category A - High quality

Category B - Moderate quality

Category C - Low quality

Category U - Unsuitable for retention

Tree or vegetation to be removed with numbered reference. Canopy spread and BS5837:2012 tree quality category.

Root protection area (RPA)  
Calculated in accordance with Section 4.6 - BS5837:2012

Precautionary Root protection area (RPA)  
Added to un-surveyed trees, preliminary 15mØ RPA added as preventative buffer

Tree protected by Conwy Council or Denbighshire Tree Preservation Order (TBC). Bracketted number reference relates to the TPO Schedule.

Veteran tree buffer (15 x stem Ø)  
(as per standing advice produced by Natural Resource Wales)

Designated Ancient Woodland and buffer (15m offset, as per Natural Resource Wales woodland inventory, via open data publication)

Black: Significant arboreal asset within development.

Red: High potential to constrain development;

Amber: Moderate potential to constrain development; and

Green: Low potential to constrain development

Construction Compound or Access Area  
Arboricultural constraint based on providing a construction exclusion zone (CEZ).

Black: At all times, compound should avoid entering this area;

Red: In nearly all circumstances, compound should avoid entering this area;

Amber: In most circumstances, compound should avoid entering this area;

Green: Little or no arboricultural constraint which would affect compound location.

Trenchless

Trenching / Trenchless

Trenched

Temporary protective fencing in accordance with Section 6.2 - BS5837:2012. See example, also shown within supporting report.

Temporary visual warning barrier. See example detail, also shown within supporting report.

NOTES:

Refer to RPS Tree Survey & Arboricultural Impact Assessment Report for further details.

Survey based on a visual inspection from the ground and is not intended as a full arboricultural inspection.

Plan produced in accordance with recommendations set out in BS 5837:2012 - 'Trees in Relation to design, demolition and construction'.

Due to the legal protection afforded to breeding birds vegetation removal should not take place during the bird nesting period, generally, although not restricted to, March - August inclusive.

Survey based upon aerial photography, therefore tree locations should be deemed as approximate, and not digitally accurate.

Pedestrian/ vehicular emergency access routes to be maintained at all times.

All protective fencing to be completed and approved by LPA / CA prior to commencement of any site works.

All works to conform with requirements of:  
BS 3698:2010 - Tree Works  
BS 5837:2012 - Trees in relation to design, demolition and construction

Rev	Description	By	CB	Date

Partners in UK offshore wind

Drawing Number:  
  
7138

VER	DATE	DETAILS	BY	CHECK
01	Jan/24	Comment	RC	DC
02	Feb/24	Information	RC	DC

**Project Name:**  
MONA OFFSHORE WIND PROJECT

**Drawing Title:**  
TREE AND HEDGEROW PROTECTION PLAN

**Scale**  
Scale@A0: 1:500  
0 50m

**Geodetic Information:**  
Datum: ETRS 1989  
Projection: British National Grid

**Data Sources:** Client

**Service Layer Credits:** Esri, HERE, Garmin, Intermap, increment P Corp., GEBCO, USGS, FAO, NPS, NRCAN, GeoBase, IGN, Kadaster NL, Ordnance Survey, Esri Japan, METI, Esri China (Hong Kong), (c) OpenStreetMap contributors, and the GIS User Community